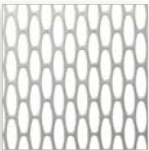


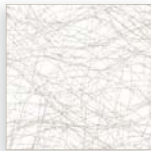
Life.Beauty.Purpose.Lumicor

QUICK SHIP

METALLIC



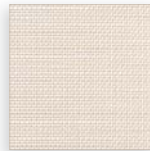
Large Ovalesque Lumiclear™
Gloss/Matte
36" x 96"



Silver Spun Lumiclear™
Gloss/Gloss



Silver Mesh Lumiclear™
Gloss/Matte



Bronze Mesh Lumiclear™
Gloss/Matte

TEXTILES



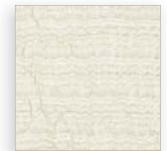
Pearl Taipei Lumiclear™
Satin/Satin



Pearl Milan Lumiclear™
Gloss/Gloss



Oyster Linen Lumiclear™
Gloss/Matte

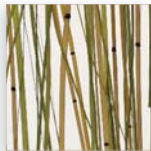


Avanti Lumiclear™
Gloss/Matte

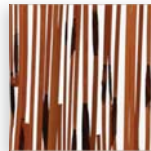
NATURAL



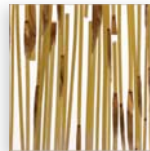
Madagascar Lumiclear™
Gloss/Matte



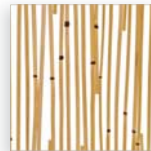
Rainforest Lumiclear™
Gloss/Matte



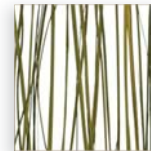
Tortoise Reed Lumiclear™
Gloss/Matte



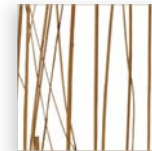
Pampas Reed Lumiclear™
Gloss/Matte



Spring Zito Lumiclear™
Gloss/Matte



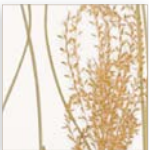
Coastal Lumiclear™
Gloss/Matte



Palapa Grass Lumiclear™
Gloss/Matte



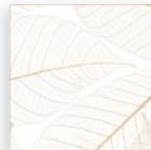
Prairie Grass Lumiclear™
Gloss/Matte



Oasis Lumiclear™
Gloss/Matte



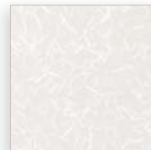
Meadow Lumiclear™
Gloss/Matte



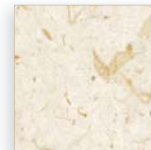
Natural Leaves Lumiclear™
Gloss/Matte



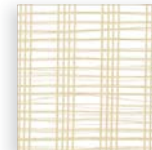
Toffee Leaves Lumiform™
Gloss/Matte



Rice Paper Lumiform™
Satin/Satin
38" x 96"



Paper Leaf Lumiform™
Satin/Satin
44" x 96"



Searchlight Lumiclear™
Gloss/Matte

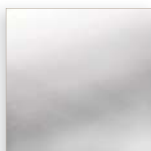


Bamboo Rings Lumiclear™
Sandstone/Sandstone

EMBOSSED

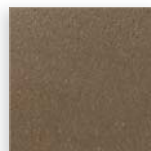


Rain Lumiclear™
Gloss/Gloss



Clear, Gloss Lumiclear™
Gloss/Gloss

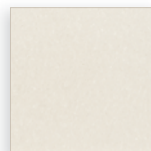
MICA



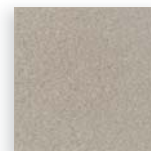
Bronze Mica
.135" / 3.4mm
High Gloss/Unfinished
50" x 100"



Onyx Mica
.135" / 3.4mm
High Gloss/Unfinished
50" x 100"



Opal Mica
.135" / 3.4mm
High Gloss/Unfinished
50" x 100"



Pewter Mica
.135" / 3.4mm
High Gloss/Unfinished
50" x 100"

PROGRAM BASICS

Lead Time: 5 business days

Gauge: .236" / 6mm *unless otherwise noted*

Sheet Size: Standard sheet size is 48" x 96" *unless otherwise noted.*

Maximum order size is 10 sheets. Limited to quantities on hand.

Panels can be fabricated on site with common woodworking tools or let Lumicor do it for you. We provide a wide array of options including edge profiles, edge sealing, edge finishing, CNC routing, saw cutting, forming and drilling. (5 day lead time does not apply to panels requiring fabrication.)

 Available in R4[®] certified recycled resin.

TO ORDER: 1.888.LUMICOR | www.lumicor.com

© Copyright Lumicor 2011 - All Rights Reserved